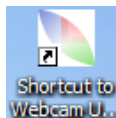


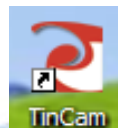
Clover Camera Startup

There are two Clover cameras at Boardman. Each is uploading to the weather website (www.k1s8.com/boardman/Current_Vantage_Pro.htm). Each camera runs off of a different program. Boardman 1 is running off of **Webcam Uploader 2004** and Boardman 2 is running off of **TinCam**.

Boardman 1



Boardman 2



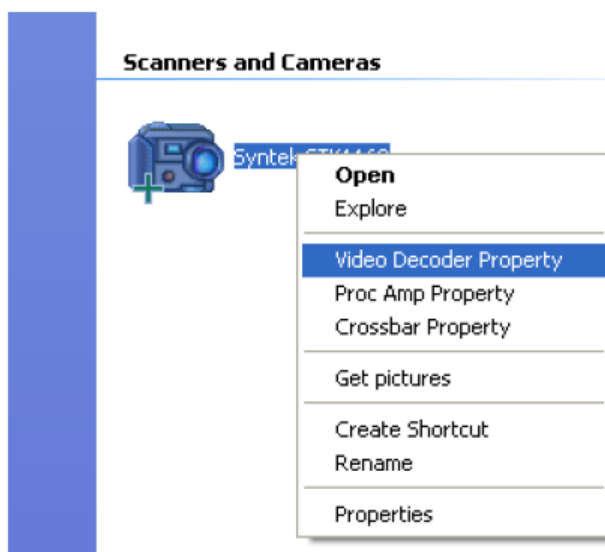
Each of these programs starts automatically when windows starts. To make sure they are running look on the side tray for these icons.



If the programs are closed follow the specific instructions below.

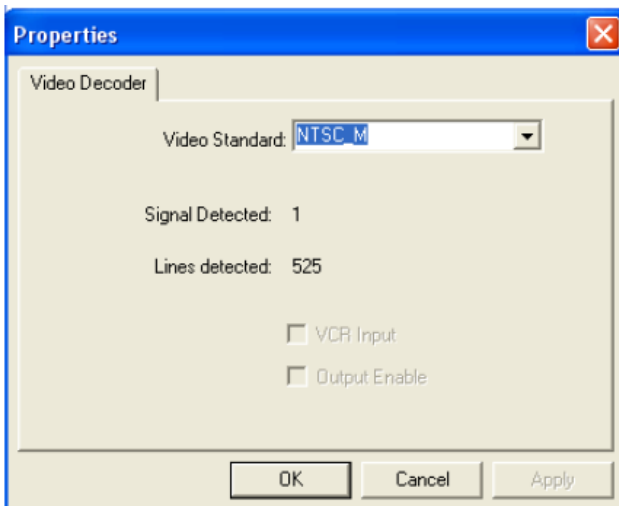
Boardman 1 – Webcam Uploader 2004

- Make sure the **Video Cable** is connected to the **Video to USB Converter** to the back of the computer on **channel 2**.
- Go to **My Computer** and then drop down until you see the **Syntek STK1160** icon.
- Right Click and go to **Video Decoder Property**.

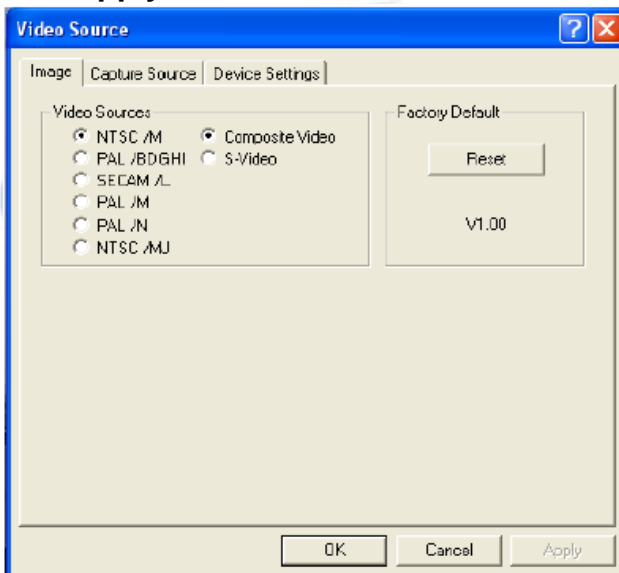




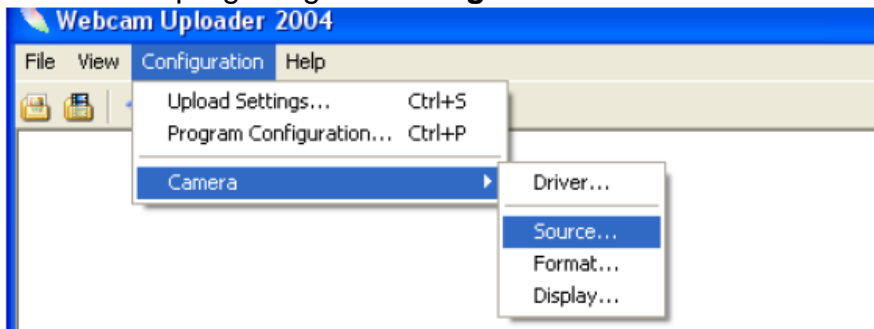
- Under **Video Standard** make sure **NTSC_M** is selected and press **Apply**.



- Right click again on the **Syntek STK1160** icon and click **Properties**.
- Go to **Image** and make sure **NTSC/M** and **Composite Video** are selected and click **Apply**.

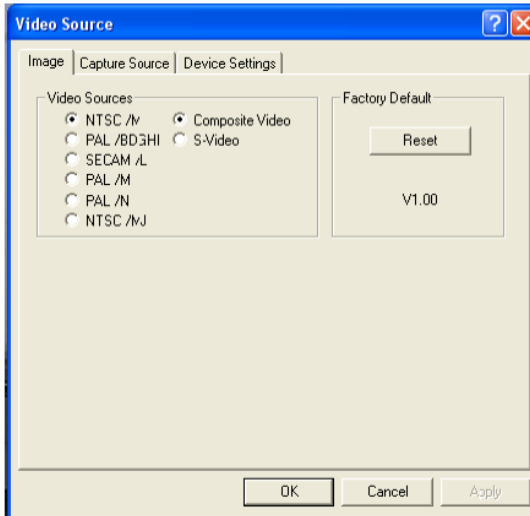


- Close out of the My Computer window and open the **Shortcut to Webcam Uploader** icon on the desktop.
- Once in the program go to **Configure/Camera/Source**.

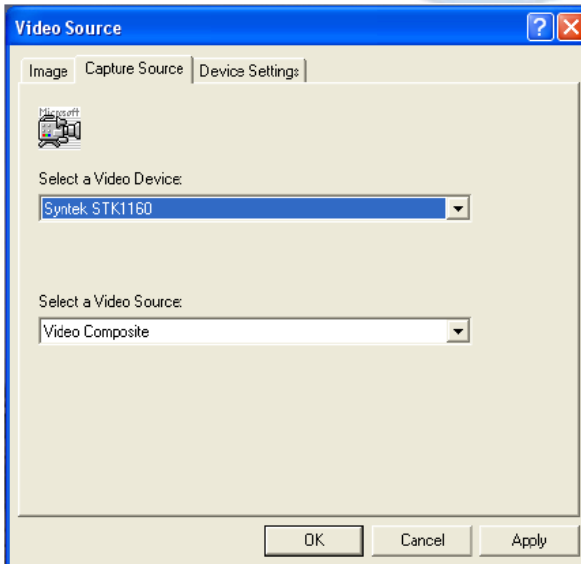




- Under Image make sure **NTSC/M** and **Composite Video** are selected.



- Under **Capture Source** make sure the **Syntek STK1160** is selected and press **Apply**.

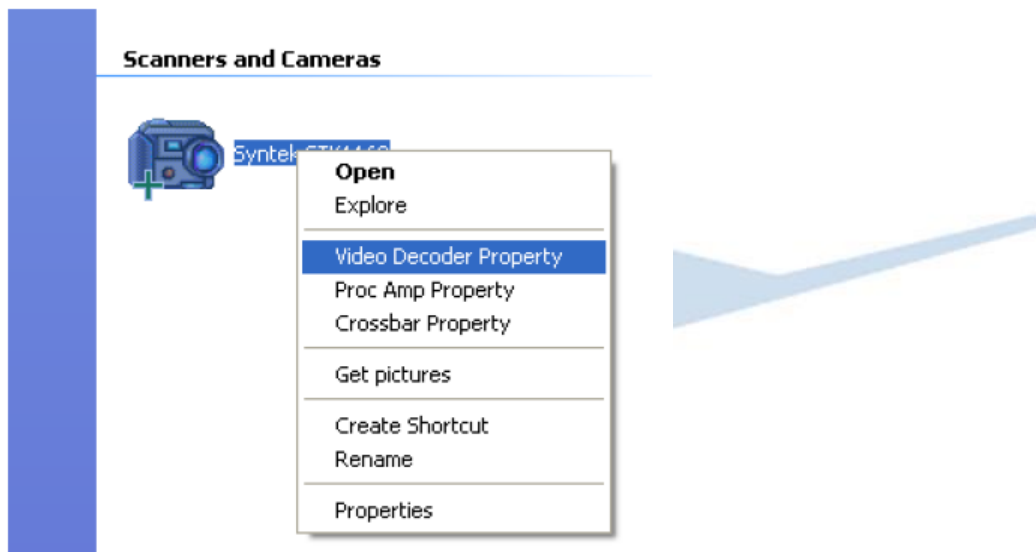


- The video from the Clover Camera should be shown on the screen and will upload by the minute.
- Leave the program running.

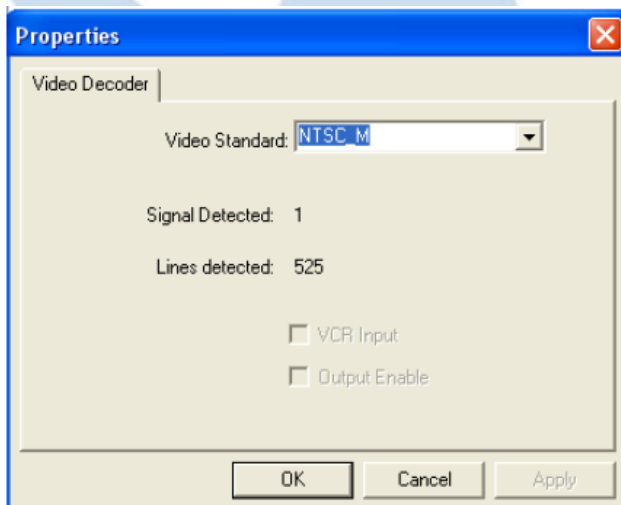


Boardman 2 – TinCam

- Make sure the **Video Cable** is connected to the **Video to USB Converter** to the back of the computer.
- Go to **My Computer** and then drop down until you see the **Syntek STK1160** icon.
- Right Click and go to **Video Decoder Property**.



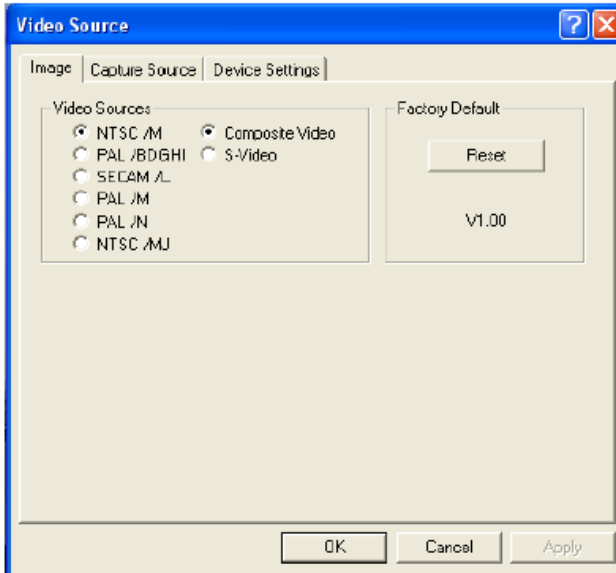
- Under **Video Standard** make sure **NTSC_M** is selected and press **Apply**.



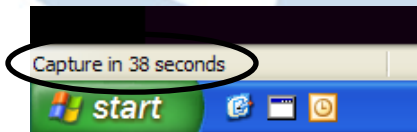
- Right click again on the **Syntek STK1160** icon and click **Properties**.



- Go to Image and make sure **NTSC/M** and **Composite Video** are selected and click **Apply**.



- Close out of the My Computer window and open the **TimCam** icon the desktop.
- The uploads should start instantaneously. A new picture is uploaded every 60 seconds.
- To check, look in the lower left corner of the window. Make sure you can see a “Capture in ...” command. If this is counting down then pictures are being uploaded by the minute.



- If no image shows up upon opening TinCam, go to **Setup/Setup Profiles** and click on **Boardman 2**. Boardman 2 should have a check mark beside it. This is the profile for the camera.

