

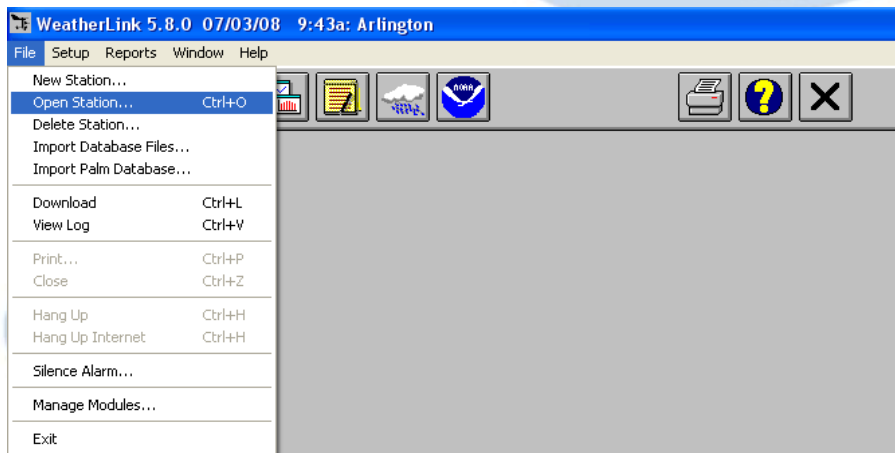
Weather Station Start-up

- Logon:
Username: weather
Password: (obtain from printed copy)
- Open the **WeatherLink 5.8.0** icon on the desktop.

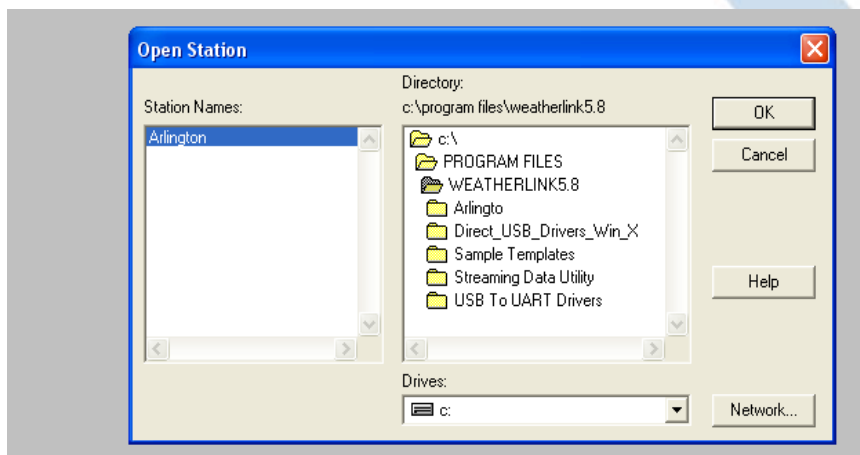


WeatherLink 5.8.0 Ink

- Go to **File/Open Station**.



- Select Arlington, and then click **Ok**.



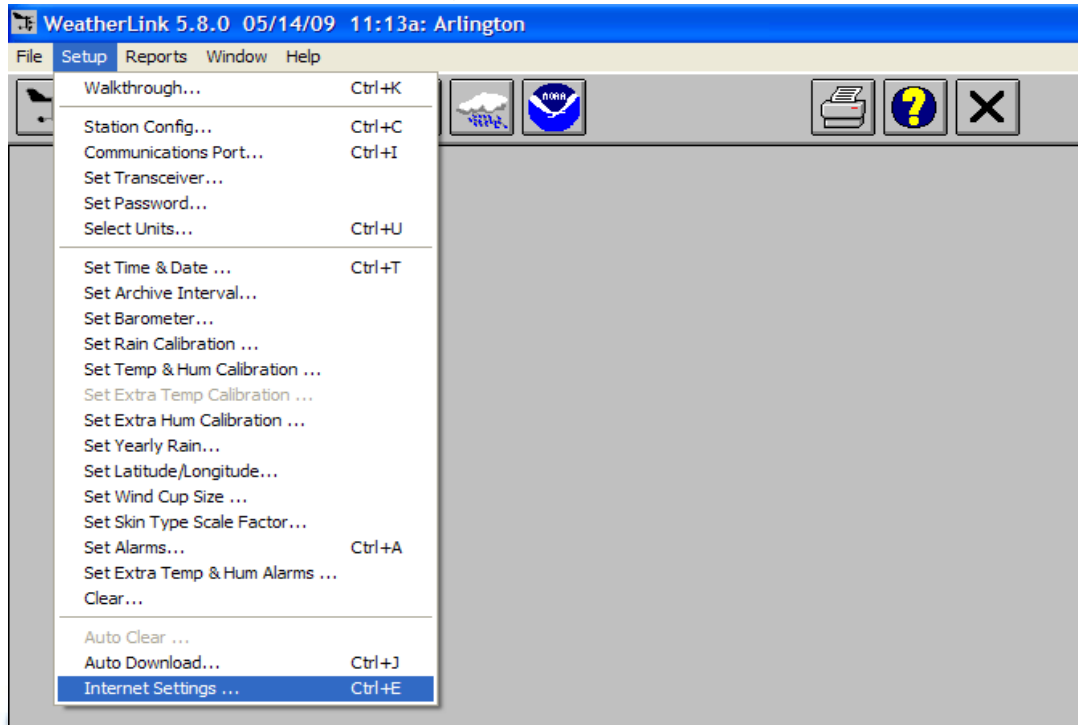
- Leave program running.



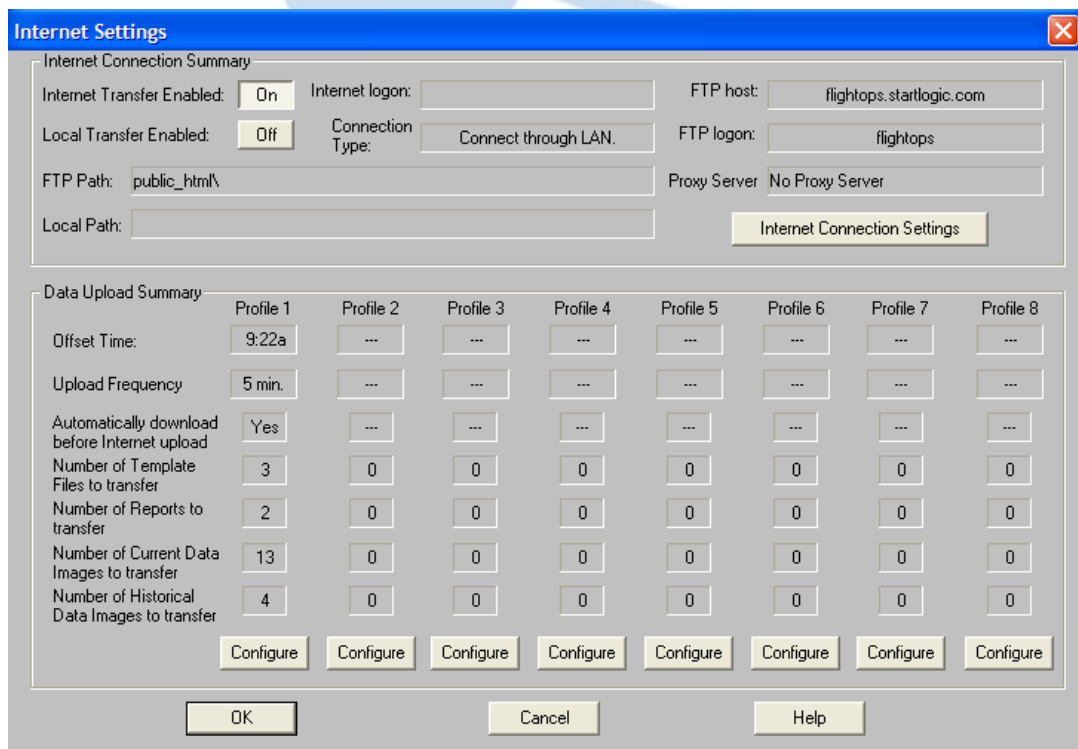
WeatherLink Operations

1. Checking the Internet Settings

- With WeatherLink open go to **Setup/Internet Settings**



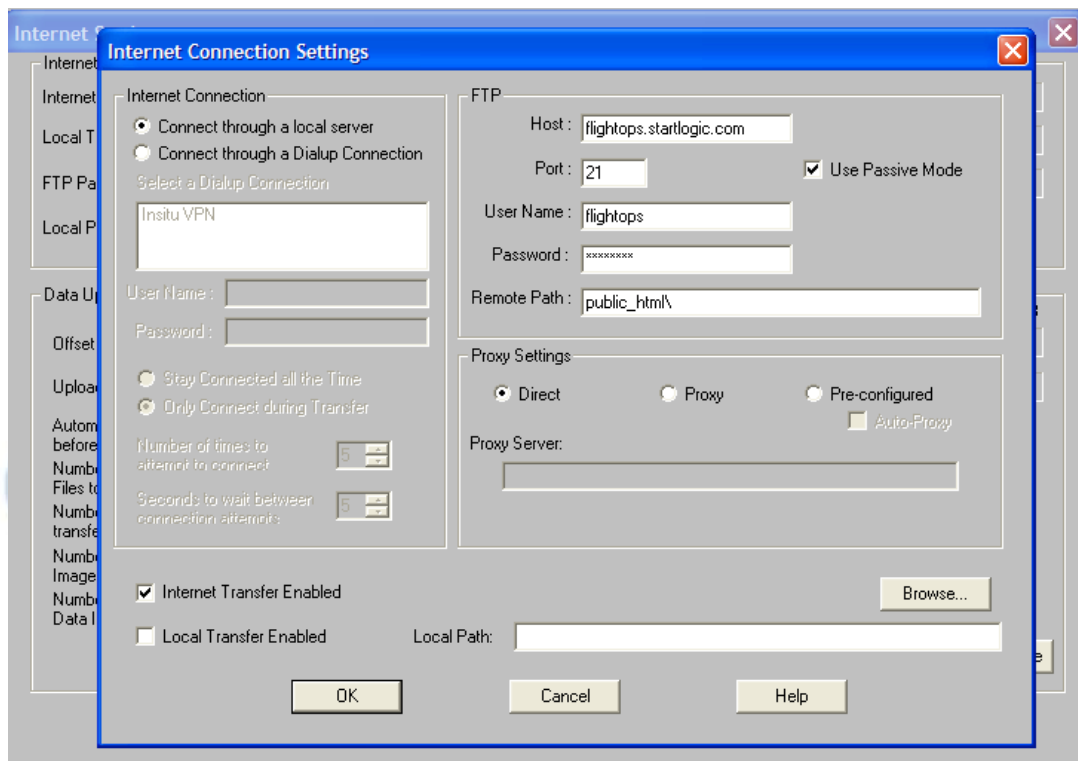
- An **Internet Settings** window will open. All the settings should be set as shown below.





The FTP host tells WeatherLink where to upload its files. The FTP login gives WeatherLink the username and password to access the online Startlogic account. To access this account online, see Arlington/Boardman Weather Website document.

- To view more advanced internet connection settings select **Internet Connection Settings** from the Internet Settings window.
- An Internet Connection Settings window will open. All the settings should be set as shown below.



This gives more specific FTP host information. Username is **flightops** and the password is **(obtain from printed copy)**. The remote path should be **public_html**.

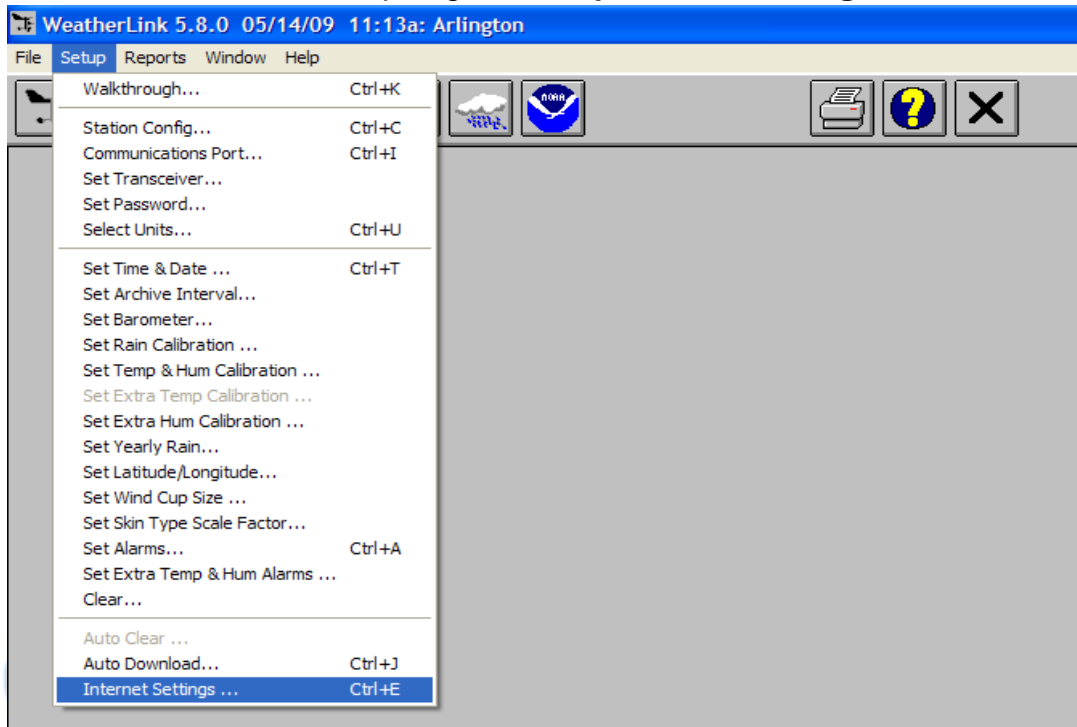
From the Arlington/Boardman Weather Website document, all the files for the Arlington station are uploaded into the public_html folder in Startlogic.

- For WeatherLink to run properly, the Internet Connection Settings window as well as the Internet Settings window should be **closed**.

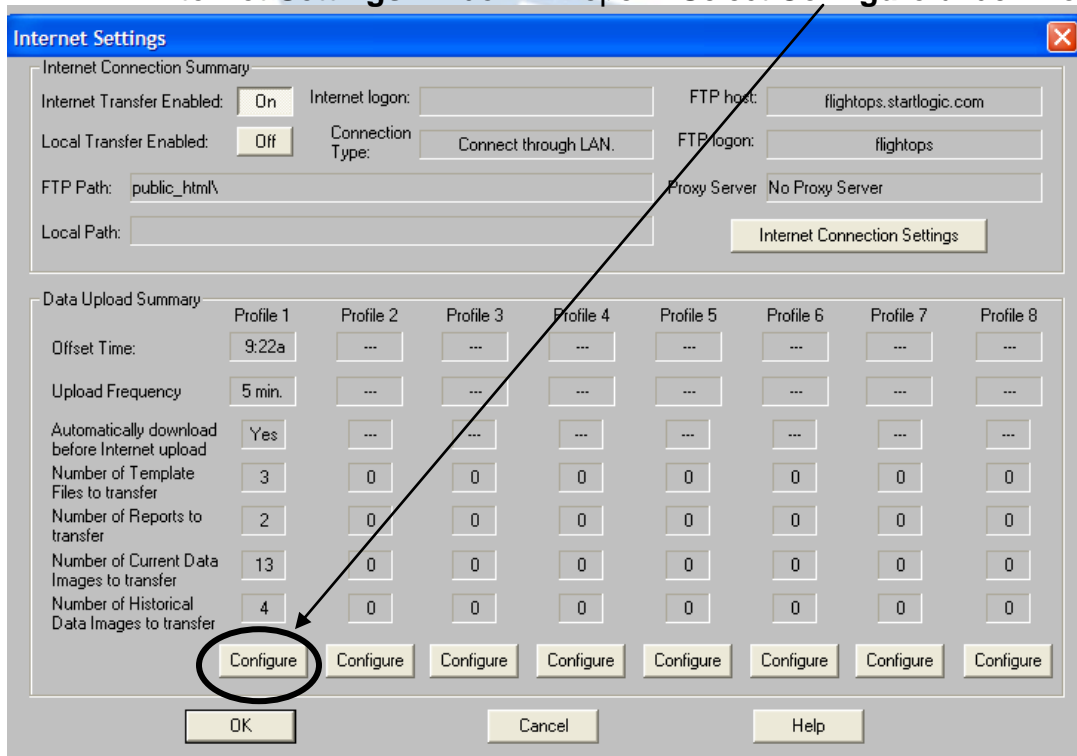


2. Editing Upload Frequency, Files and Images

- With WeatherLink open go to **Setup/Internet Settings**

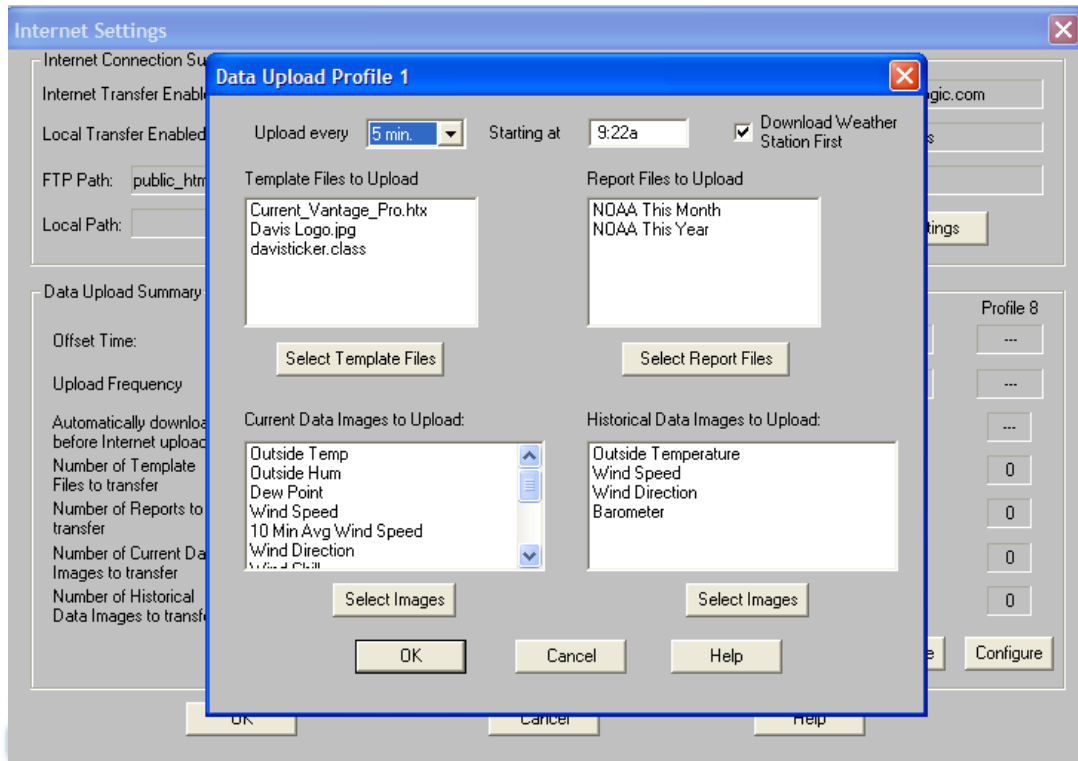


- An **Internet Settings** window will open. Select **Configure** under Profile 1.





- A **Data Upload Profile 1** window will open as shown below. Here you can change upload frequency, images and files being uploaded to the public_html folder on startlogic. The settings should be kept as they are shown below.

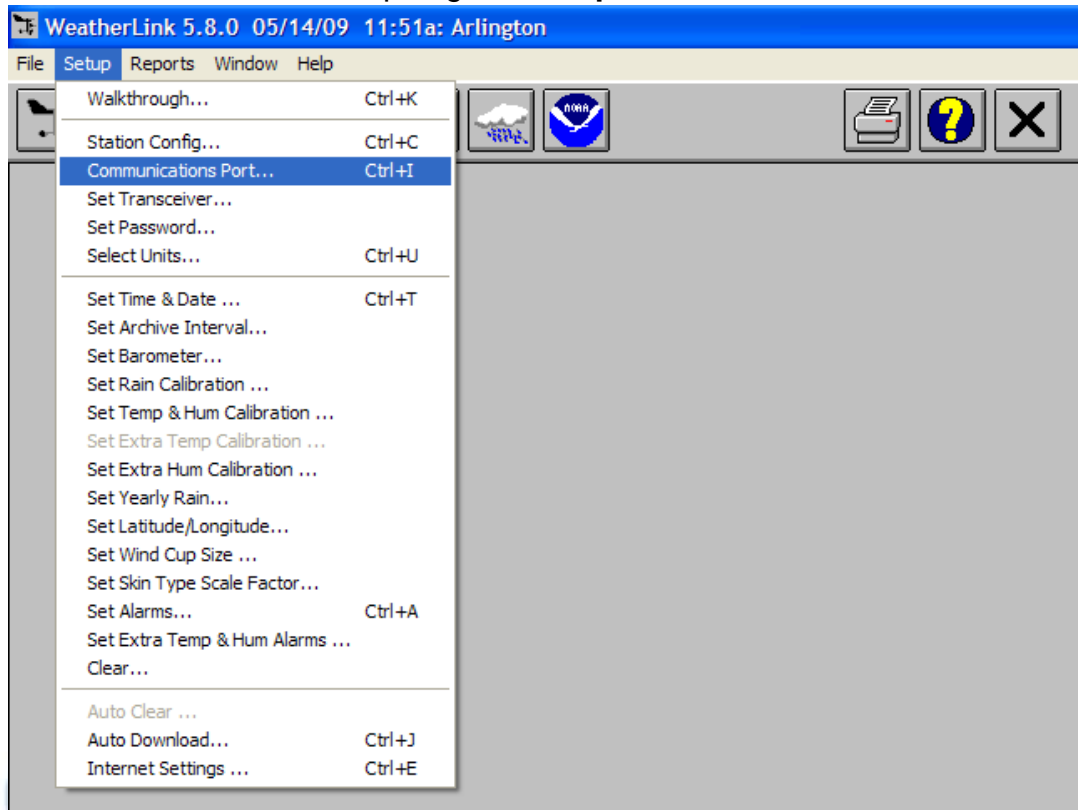


- For WeatherLink to run properly, close out of the Data Upload Profile 1 window as well as the Internet Settings Window.

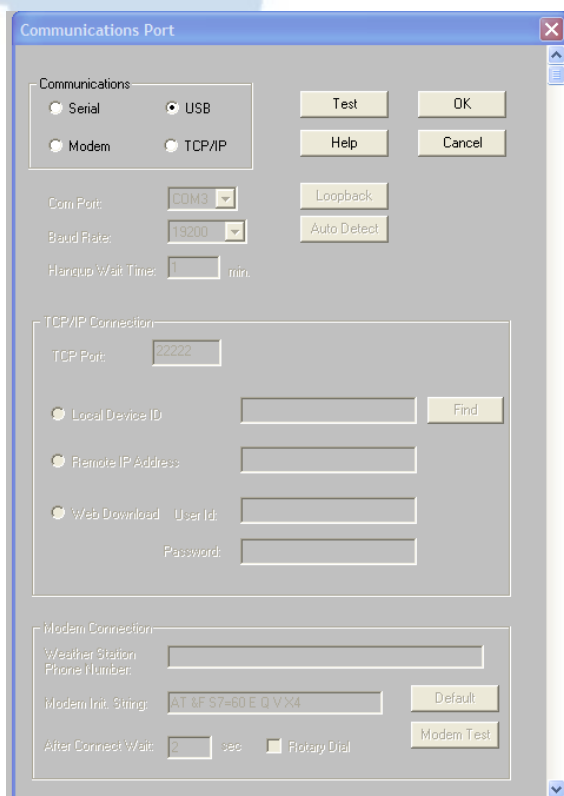


3. Checking Weather Console Communication

- With WeatherLink open go to **Setup/Communications Port**.



- A Communications Port window will open. Make sure USB is selected.

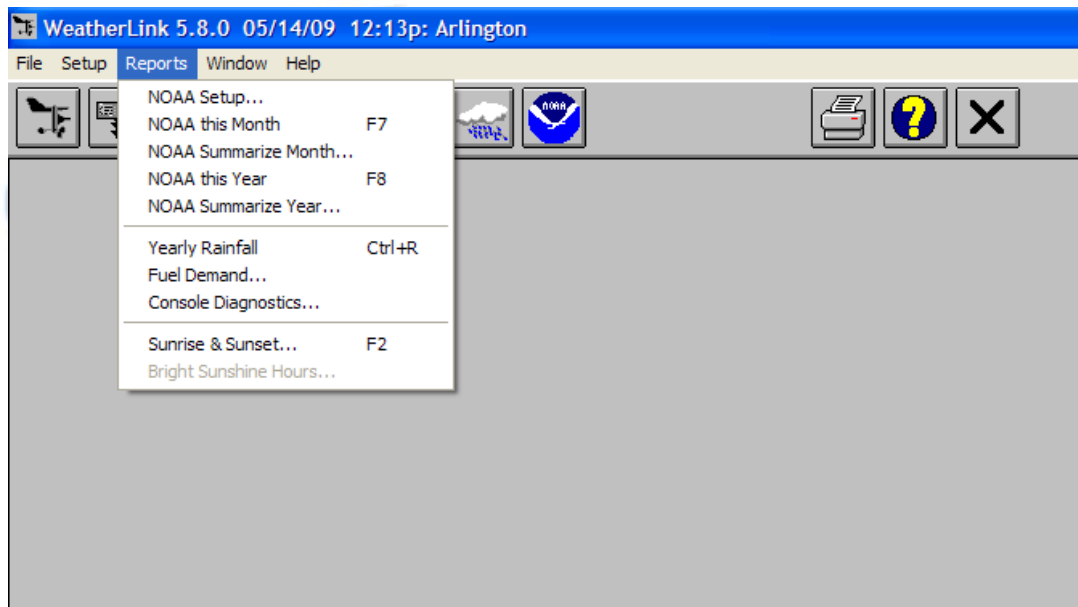




- To test, select **Test**. A widow will come up that says either **a) Error communicating through USB** or **b) Console is connected to a Vantage Pro station**.
- If an error message is displayed, disconnect the weather console to computer USB cable from the computer and then plug it back in to the computer. Select **Test** again, and WeatherLink should be able to read the console.
- This error message is caused by power surges, so make sure the weather console to computer USB cable has ferrites (cable chokes). This is the cylinder shaped thing on the end of some USB cables. Their function is to filter high frequency noise or interference. They help with power surges.

4. Retrieving Weather Data

- With WeatherLink open select **Reports**.



- This menu gives the option to retrieve monthly or yearly historical data saved by WeatherLink.
- To retrieve Current Month data select **NOAA this Month**.
- To retrieve data from any month select **NOAA Summarize Month**.
- To retrieve Current Year data select **NOAA this Year**.
- To retrieve data from any year select **NOAA summarize Year**.